



Mira Geoscience

...modelling the earth

Introduction to Geophysical Modelling and Inversion

James Reid

GEOPHYSICAL INVERSION FOR
MINERAL EXPLORERS
ASEG-WA, SEPTEMBER 2014

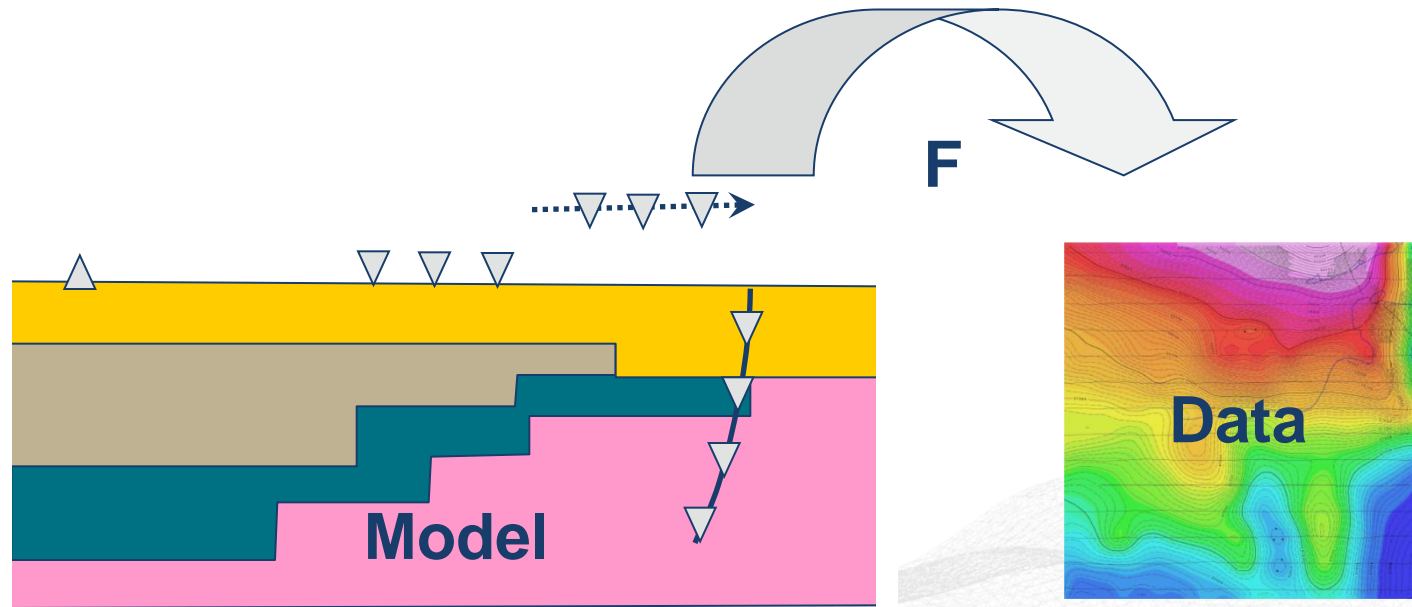


Forward modelling vs. inversion

Forward Modelling: Given a model m and predicting data d

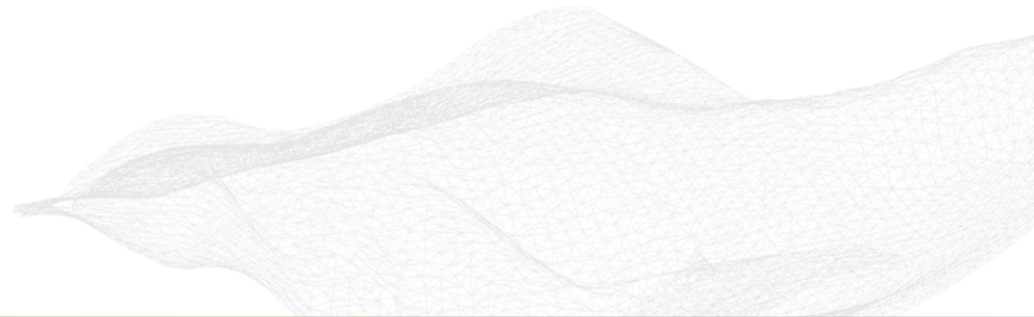
$$d = F(m)$$

F is an operator representing the governing equations relating the model and data



Inversion

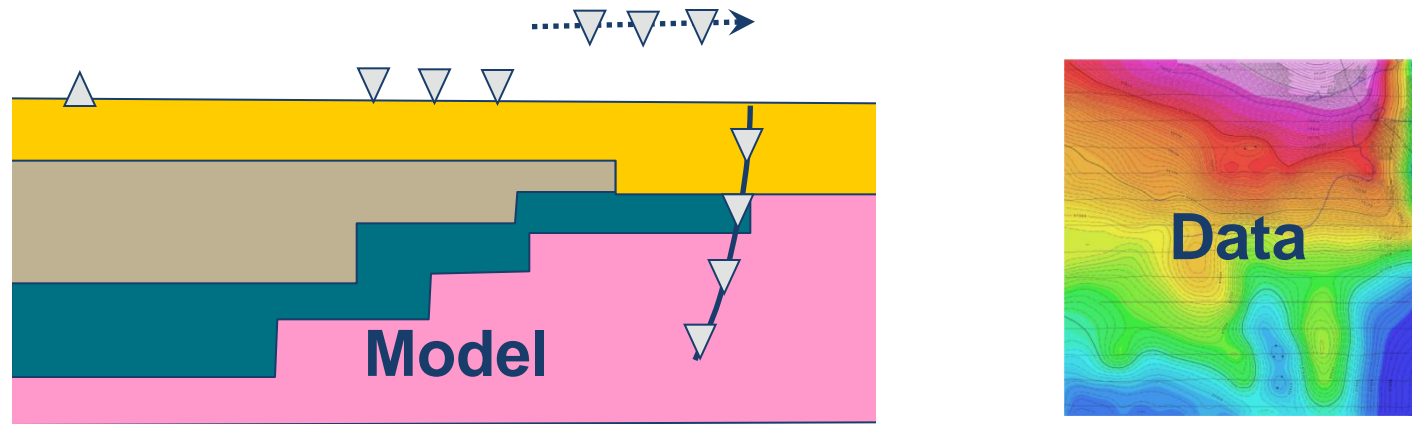
Geophysical inversion refers to the mathematical and statistical techniques for recovering information on subsurface physical properties (magnetic susceptibility, density, electrical conductivity etc) from observed geophysical data.



What is inversion?

Inversion: Recording data **d** and predicting model **m**

$$\mathbf{m} = \mathbf{F}^{-1}(\mathbf{d})$$



What is inversion?

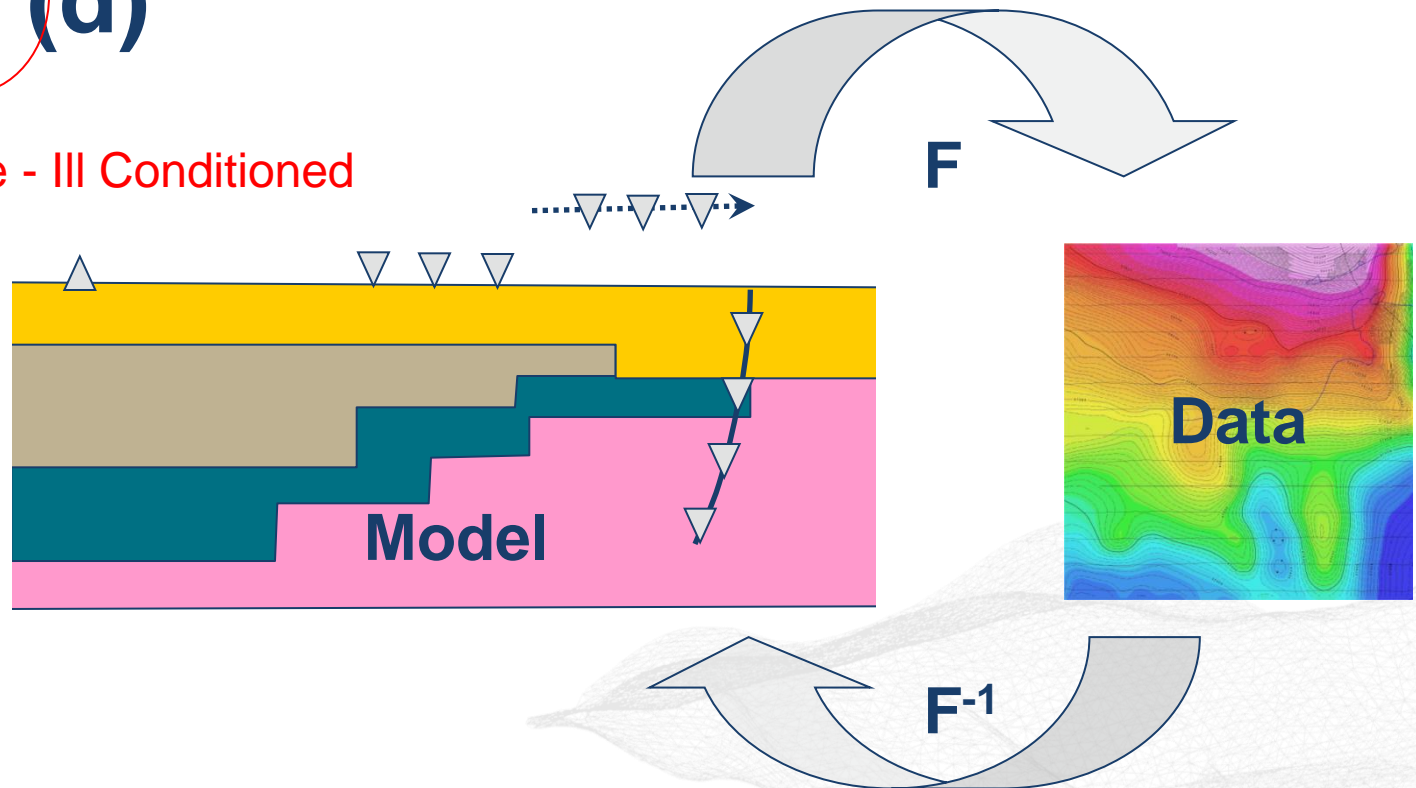
Forward Modelling: Given a model and predicting data

$$d = F(m)$$

Inversion: Recording data and predicting model

$$m = F^{-1}(d)$$

Not Possible - Ill Conditioned

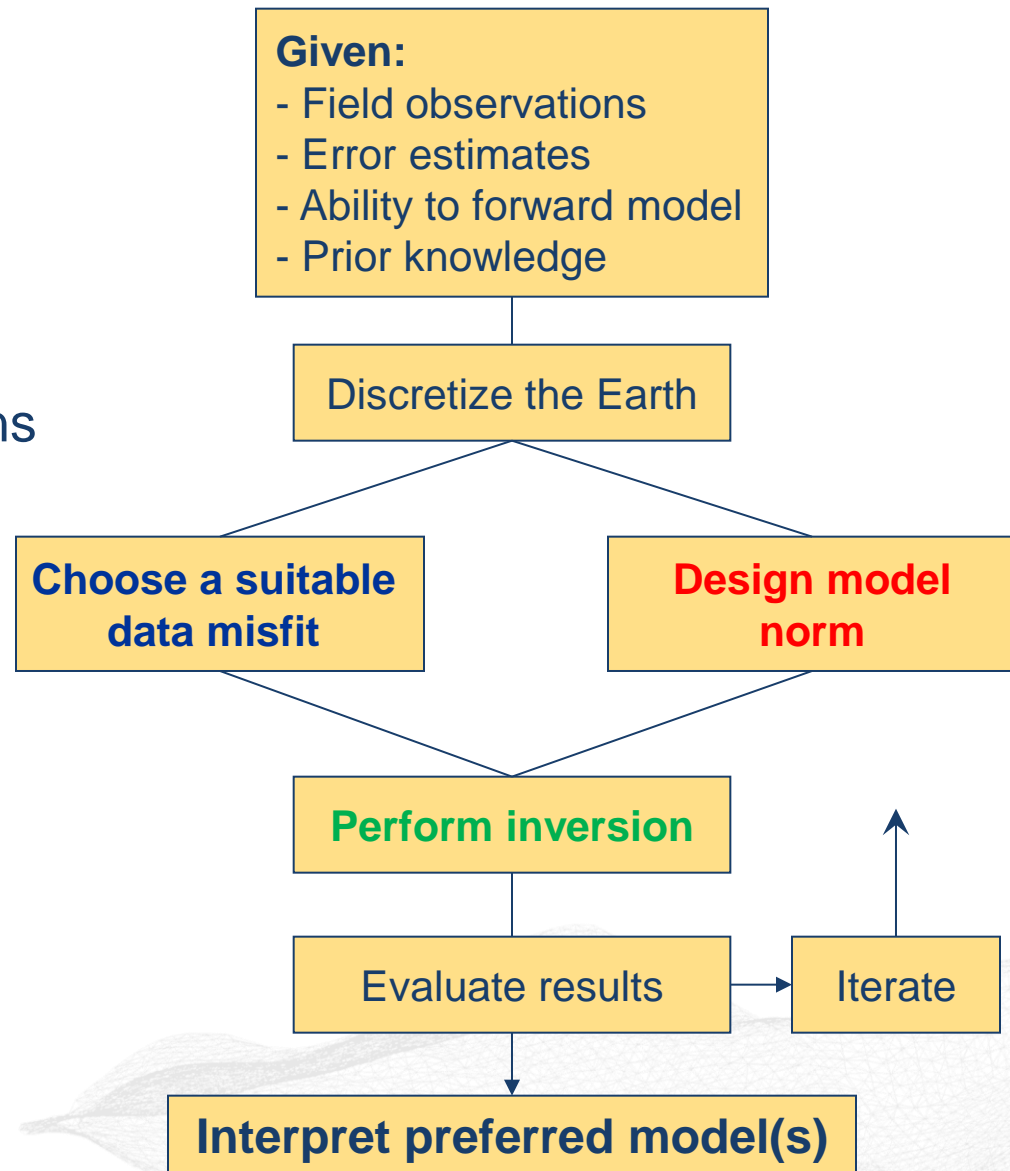


How do inversions work?

This chart summarizes the requirements for proceeding with inversion of geophysical data.

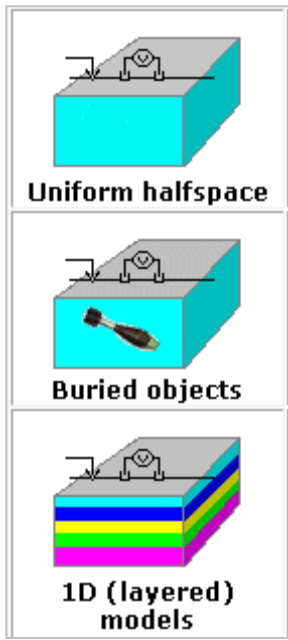
Each box has important implications for successful inversion.

Ability to do forward modelling calculations is assumed.



Models

Model Types



Single Physical Property Value

Parameterized object (susceptibility, length, depth, orientation)

Physical property varies as a function of depth

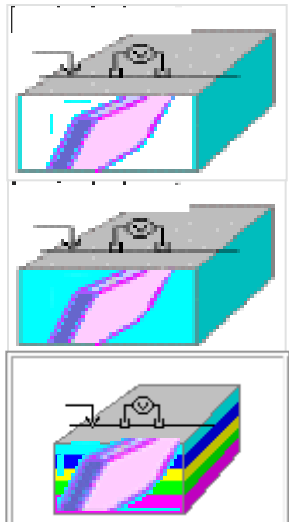


Plate in a free-space (vacuum)

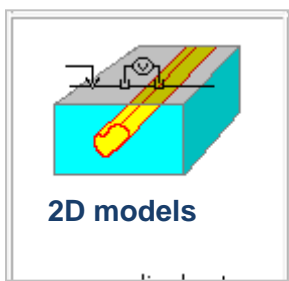
Plate in a half space

Plate in a layered model

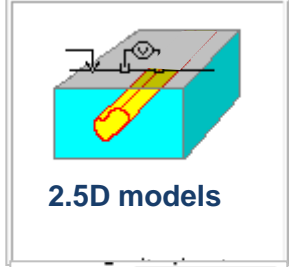
(after: Inversion for Applied Geophysics)

Models

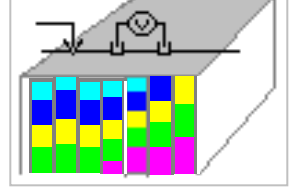
Model Types



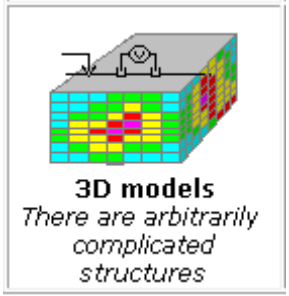
Model is unchanging perpendicular to profile section



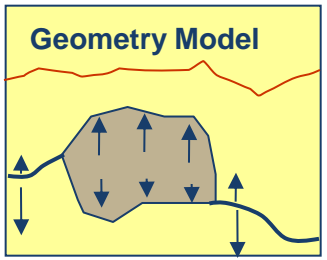
Model objects have limited strike length



Concatenated 1D models



Physical properties change in all 3 directions.
Generalized structure



Geologic unit boundaries adjust location to create 3D shapes and bodies.

(after: Inversion for Applied Geophysics)

Why invert data?

Helps explain complex data sets

e.g. DCIP, Gravity Gradiometry, AEM, ZTEM, DHEM

Removes topography effects

Explains the data with a model(s) of the earth:

Provides a quantitative model that can be analysed

→ What is the depth, geometry, volume, physical property of the model features?

More easily relates to geology - easier for interpretation

→ What geologic features can be determined in the model?

Can QC the data, identify problematic data

acquisition problems

Helps separate the noise from the signal in the data

estimates the noise levels

estimates depth of penetration



Example: Target in presence of geological noise

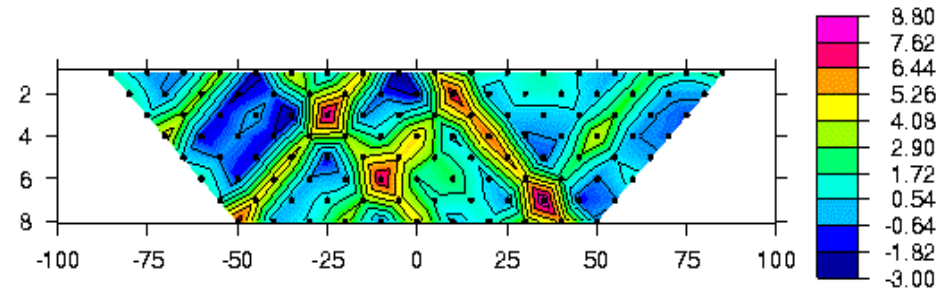
Data are sometimes difficult to interpret

Shallow anomalies represent chargeable boulders in till

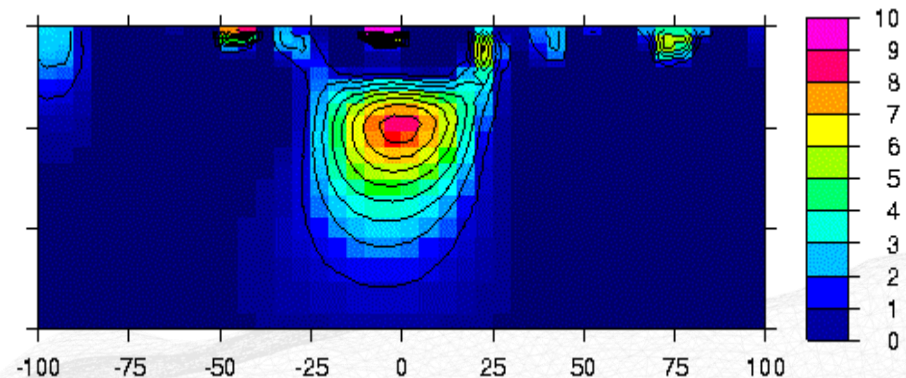
Subtle responses are important

Inversion result is more easily interpretable in terms of geology

IP data



Recovered chargeability



Know The Data

In order for modelling to occur, all instrument system and survey acquisition parameters have to be known.

In general, try to do as little as possible to the data to preserve the information

Obviously erroneous data should be removed prior to inversion.

This includes features/anomalies in the data which are not modelled by the forward modelling algorithm e.g., IP or SPM effects in EM data etc

RUBBISH IN = RUBBISH OUT

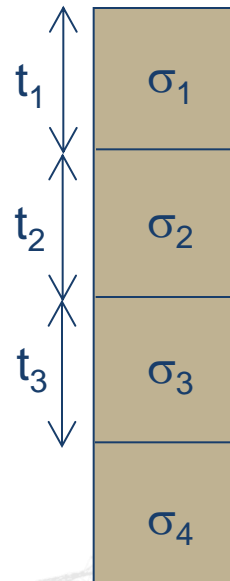
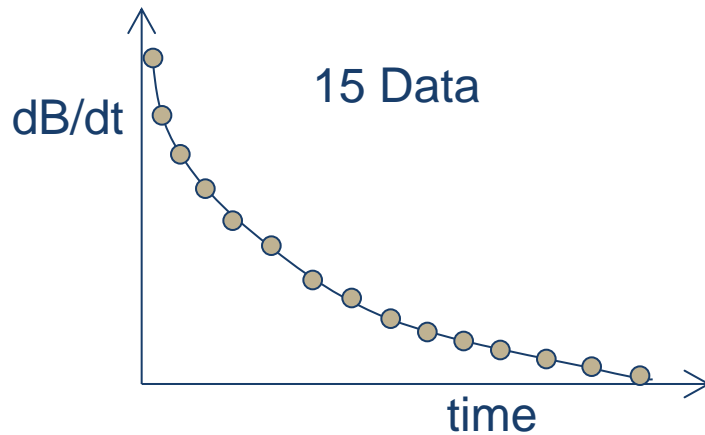


Inverse Modelling

Modelling Styles

- **Parametric** – few unknowns

e.g. TEM decay



1D Conductivity model

7 unknown
model parameters

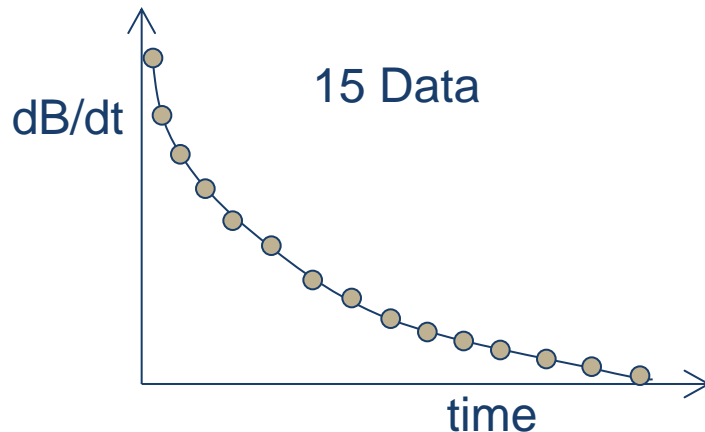
(conductivity of each layer;
thickness of upper three layers)

Inverse Modelling

Modelling Styles

- **Parametric** – few unknowns
- **Generalized** – many unknowns

e.g. TEM decay



1D Conductivity model

40 unknown
model parameters

1D Mesh structure predefined
but smaller than expected
structure of geology.

→ structure inferred from the
resulting model

Inverse Modelling

Modelling Styles

- **Lithology based**
 - VP suite (Fullagar Geophysics)
 - Geomodeller (Intrepid)
- **Physical Property based**
 - UBC-GIF codes
 - Geosoft Voxi
 - VP suite

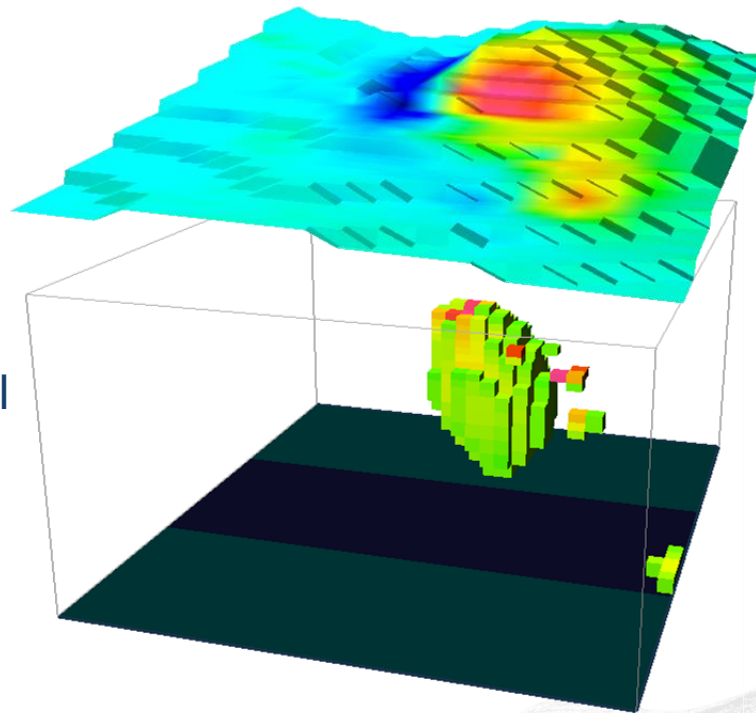


Inverse Modelling

Physical Property Based Modelling

- Physical property values of many individual cells are adjusted.
- General structure is recovered

e.g. Magnetic Data



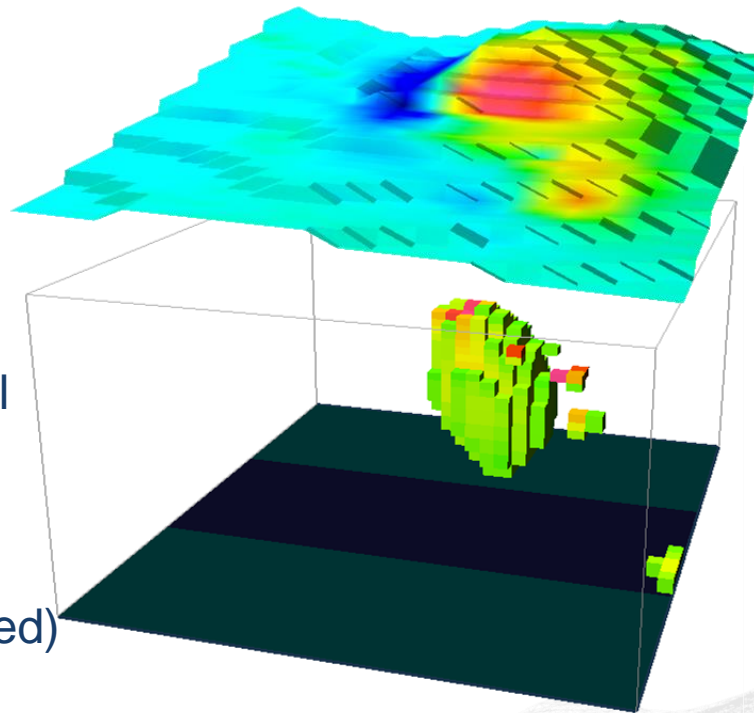
3D susceptibility model

(low value cells removed)

Inverse Modelling

Physical Property Based Modelling

- Physical property values of many individual cells are adjusted.
- General structure is recovered.



e.g. Magnetic Data

3D susceptibility model

(low value cells removed)

10,000+ unknown model parameters

3D Mesh structure predefined but smaller than expected structure of geology.

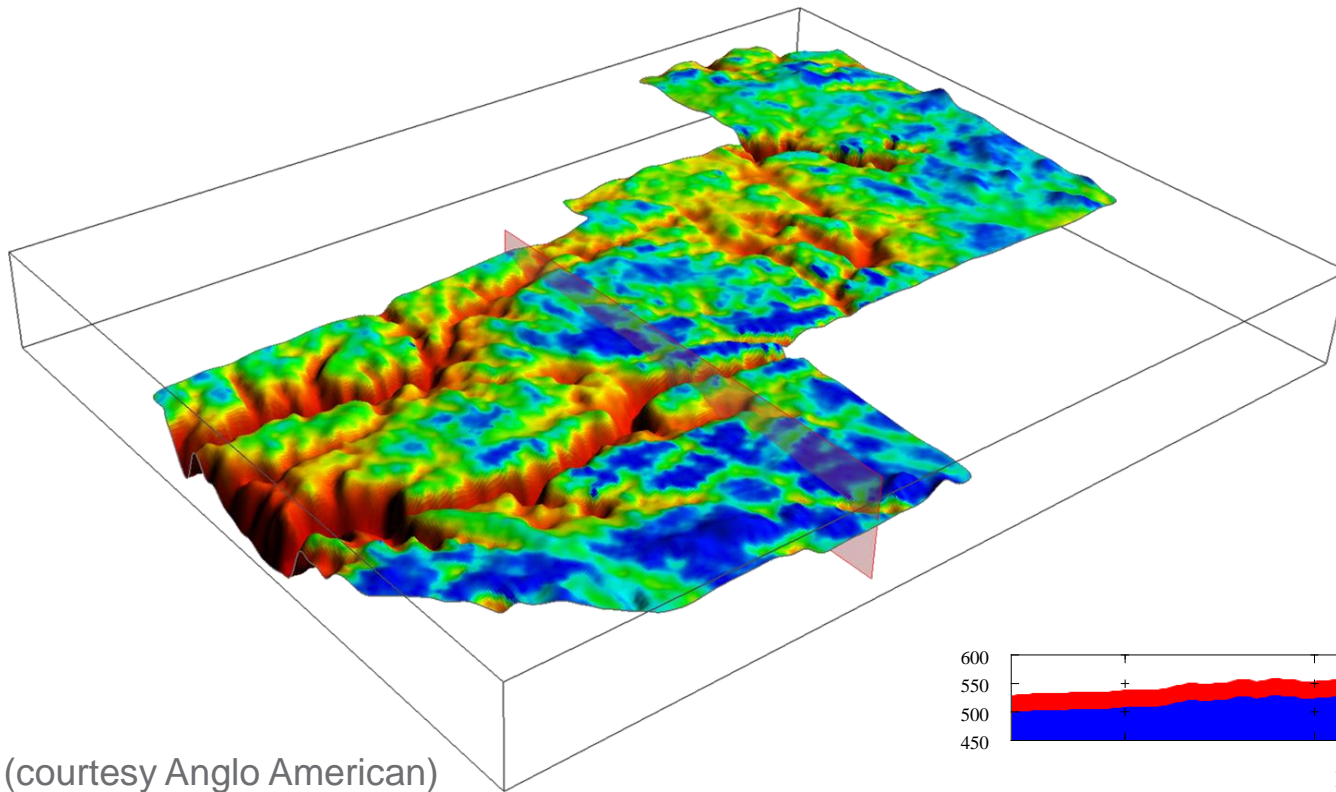
→ structure inferred from the resulting model

RESULT IS A PHYSICAL PROPERTY MODEL CONTAINING STRUCTURE

Inverse Modelling

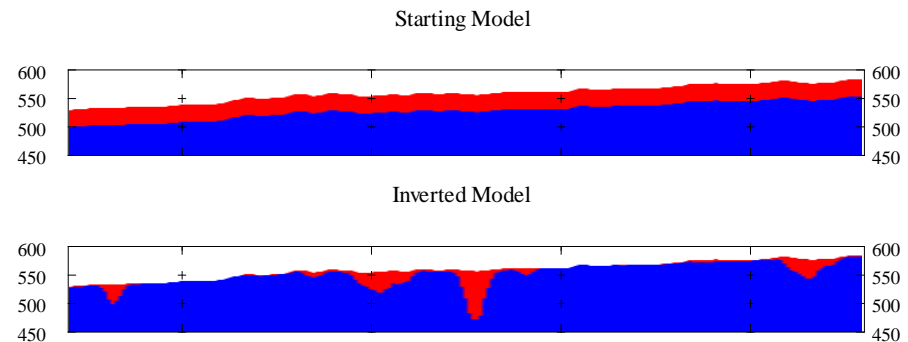
Lithology Based Modelling

- Provide physical properties (single value or distribution) for each lithology and adjust the geometry to fit the data.



**RESULT IS A
GEOLOGICAL
MODEL**

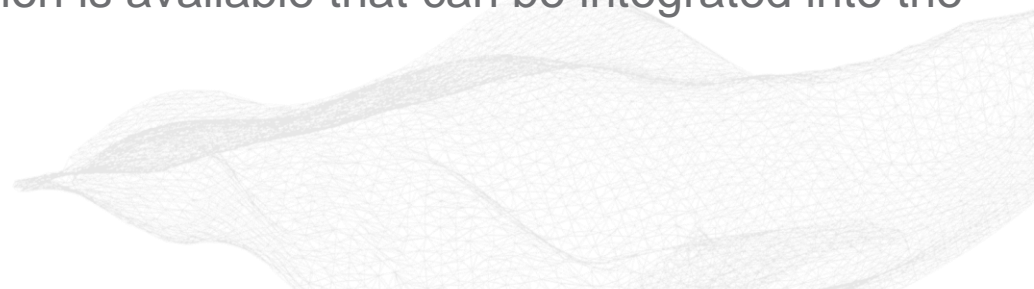
(courtesy Anglo American)



Inverse Modelling

Which Modelling Style to choose?

- Depends on the geophysical method, the survey design, and the exploration goal. Some examples might be:
 - Is the goal to define the geometry/volume?
Measure the physical properties well and choose a lithologic based inversion (e.g. VPmg)
 - Is the goal to define a thickness of cover from a few TEM soundings?
Use a parametric inversion
 - Is the goal to define both physical properties and geometry?
Use a generalized inversion (e.g. UBC)
 - What geologic information is available that can be integrated into the modelling?

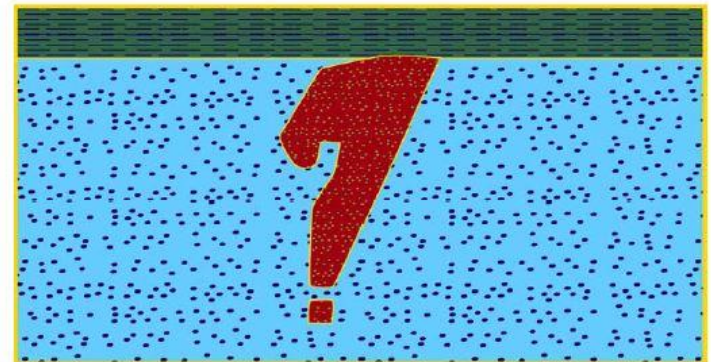
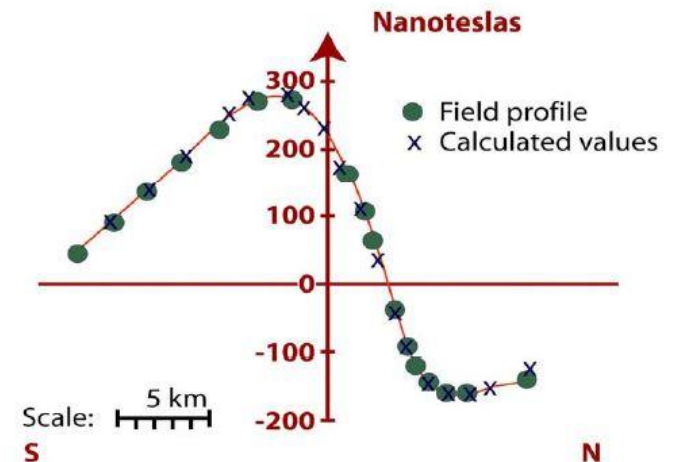


Acceptable models and non-uniqueness

There are infinitely many models that can explain the observed data

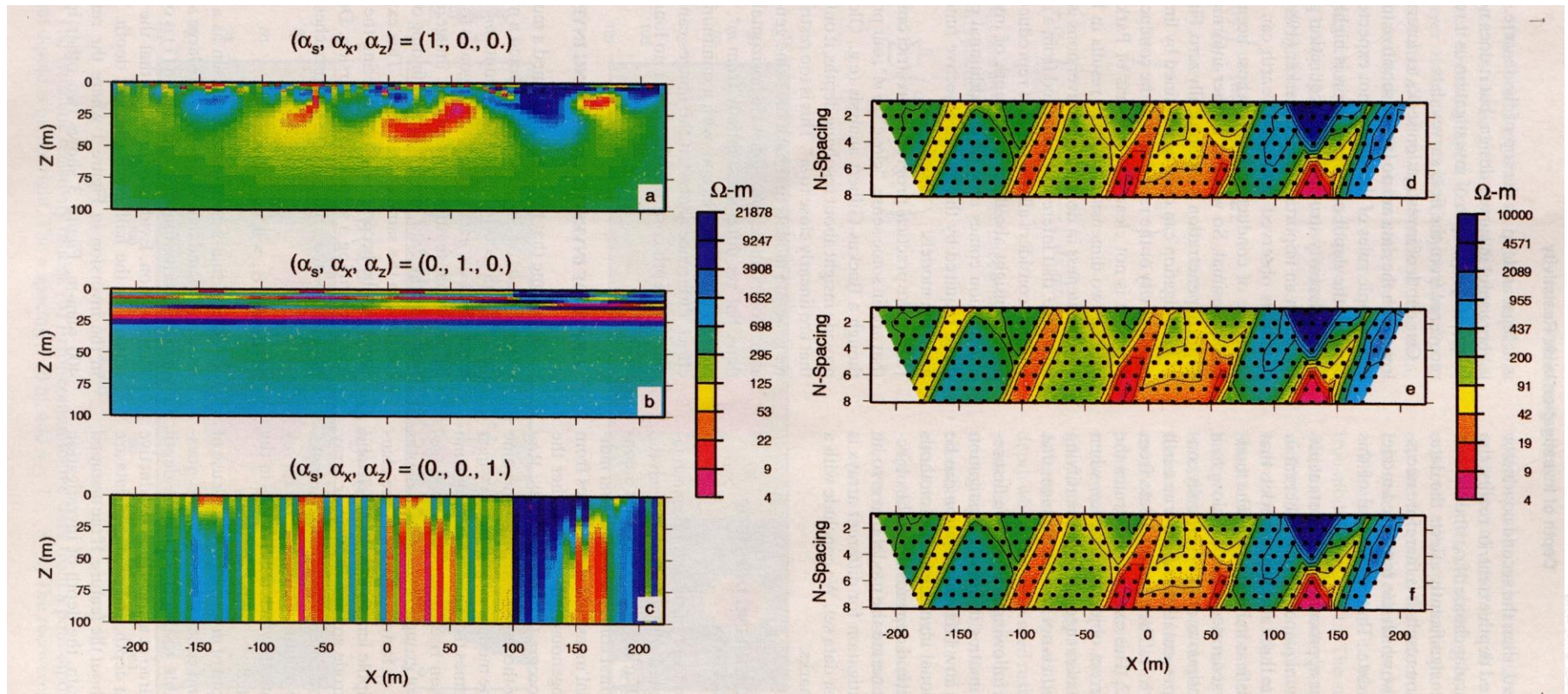
Why is this so?

- Because there are usually more unknowns (model parameters) than observed data points (underdetermined problem)
- Some physically-based non-uniqueness
- Real data contain noise



Acceptable models and non-uniqueness

There are infinitely many models that can explain the observed data



How to choose one of infinitely many solutions?

Narrow down the range of options using prior knowledge

Geophysical prior knowledge:

Values are positive, and/or within bounds

Physical Properties: Estimates for host rock properties

Point-location values from drill hole information

Logical prior knowledge:

Find a “simple” result - as featureless as possible.

This sacrifices resolution but prevents over-interpreting the data.

Geological prior knowledge:

Character of the model (smooth, discontinuous)

Some idea of scale length (or size) of the bodies

Structural Constraints



Model norm

The model norm is a measure of the (mathematical) “size” of a model

The inversion process is an automated decision making scheme

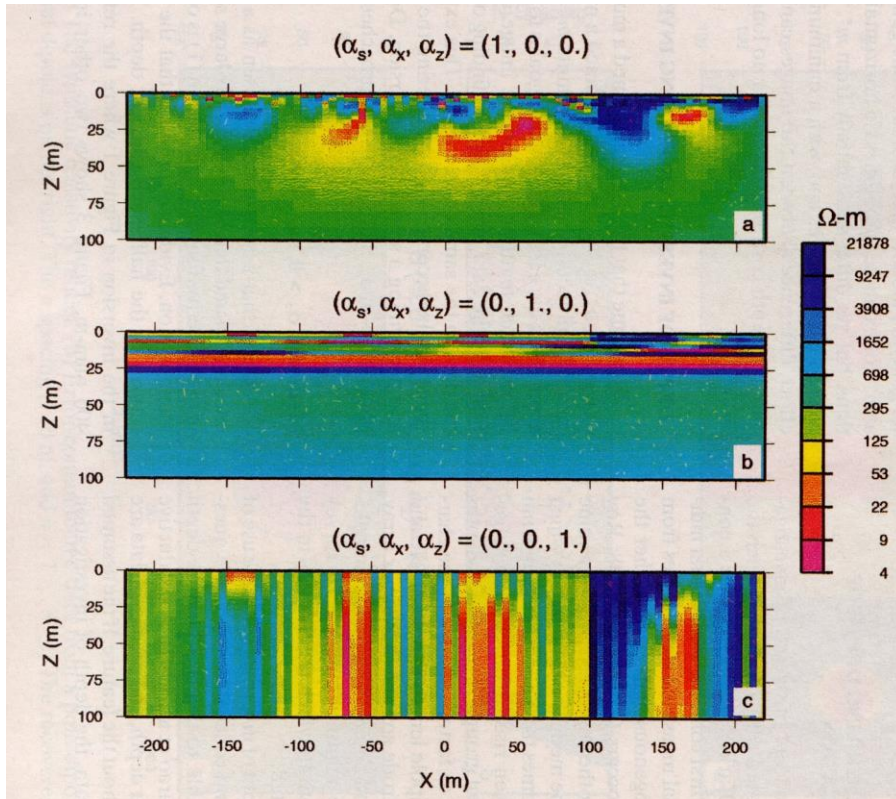
The model norm is a way of encoding prior information in a form suitable for mathematical optimisation – we seek the “smallest” model

The model norm is **part** of the solution to nonuniqueness ...

Nonuniqueness is addressed by choosing the one model (from infinitely many) that minimizes the defined model norm



Model norms



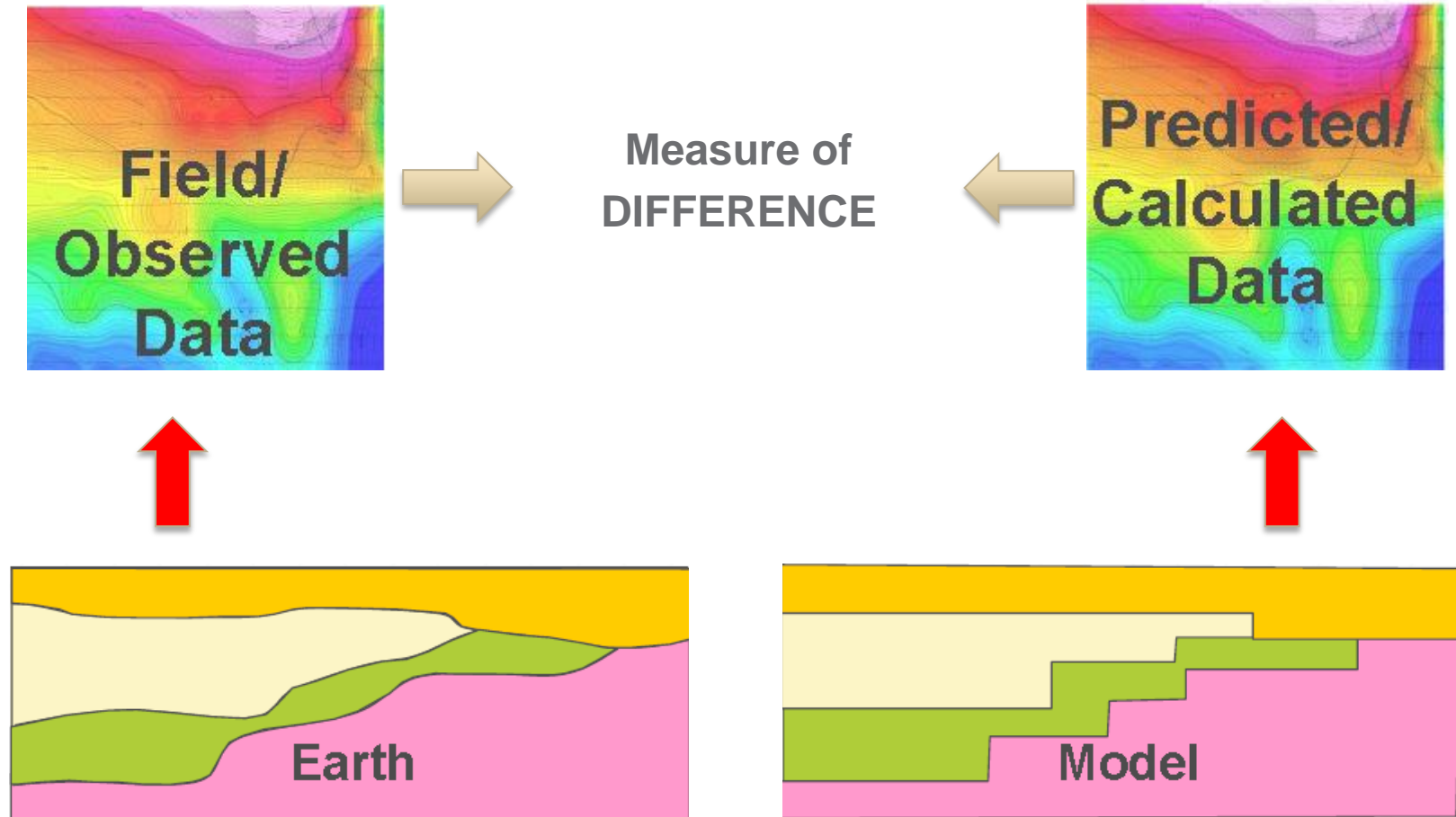
Smooth

Minimum horizontal structure

Minimum vertical structure

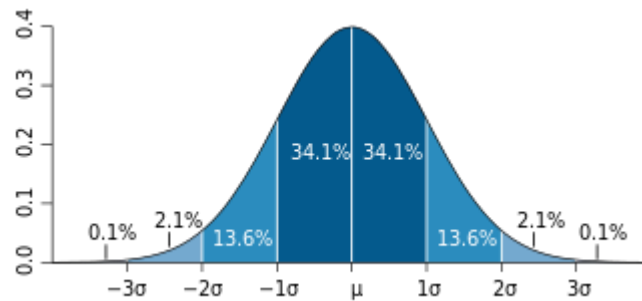
Minimise difference between the model and some “reference model”

Data misfit



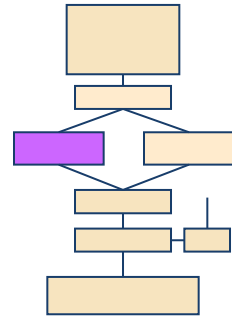
What is a good measure of misfit?

If we assume errors follow a particular distribution



then a measure of total misfit between predictions and field data can be defined $\phi_d(m)$:

- Predictions can be considered OK when $\phi_d(m) < tolerance$
- We don't want to fit the data too closely or we are fitting noise
- Not all measures of Data Misfit are equal



What contributes to data noise?

Natural and cultural noise sources

Accuracy and precision in data measurements

Data positioning errors

Approximations made in forward modelling

1D

2D

3D

Plates

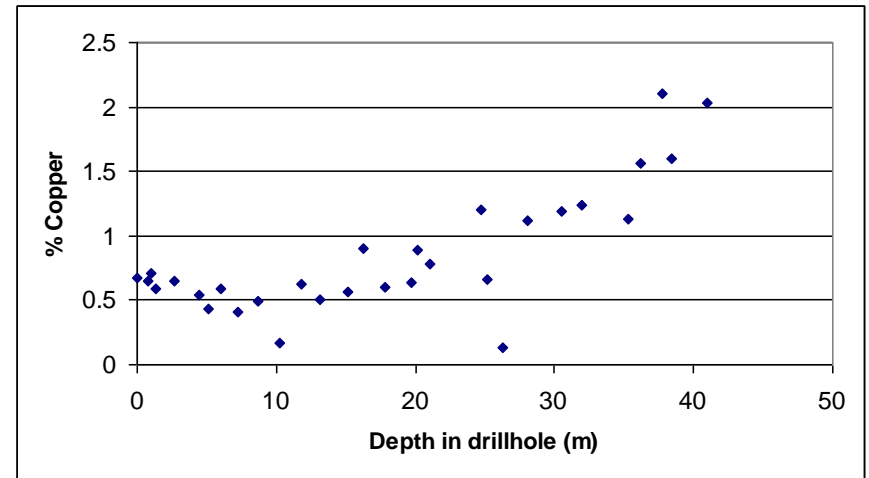
Anisotropy

Discretization of topography



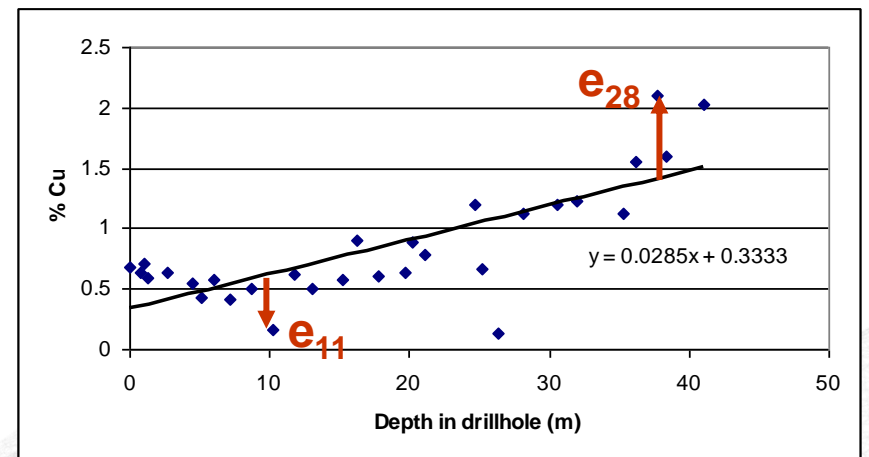
Measures of misfit

Consider the problem of fitting a straight line to the data shown below:

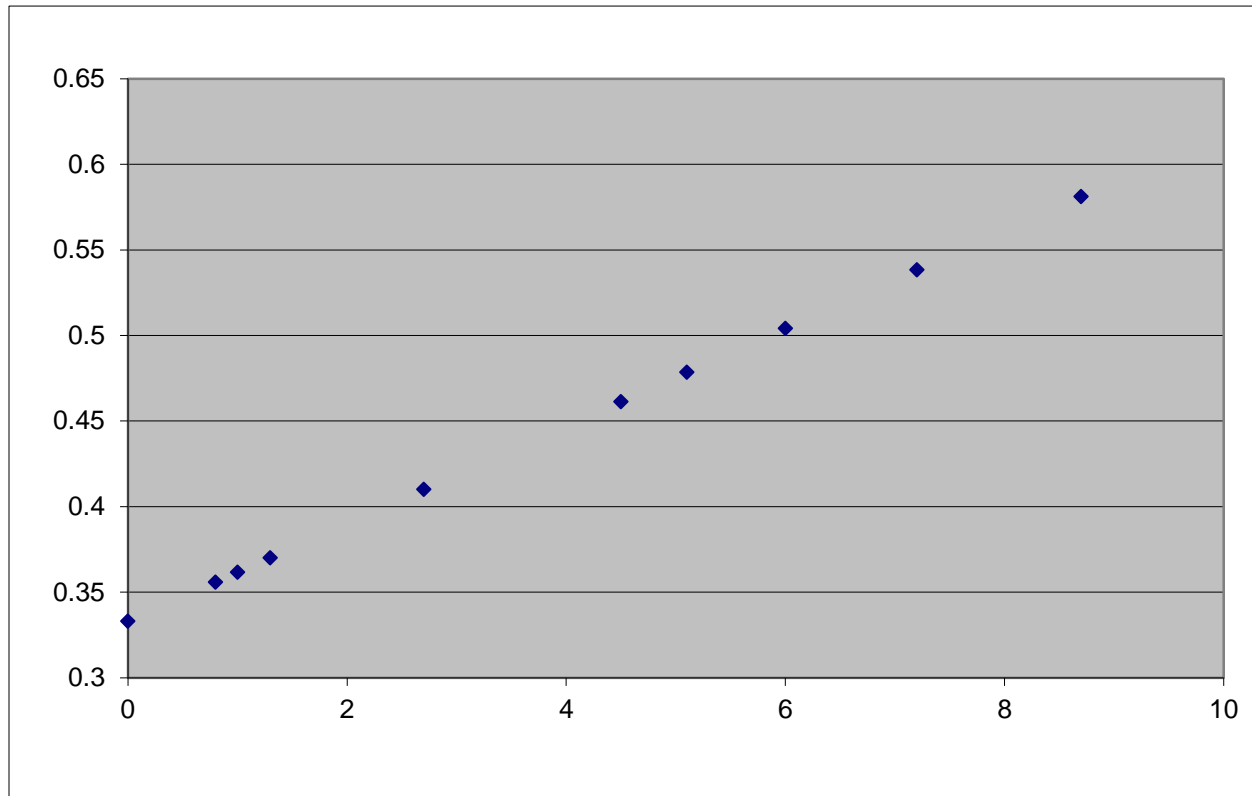


The residuals are the differences between the data points and the best-fit line at each depth

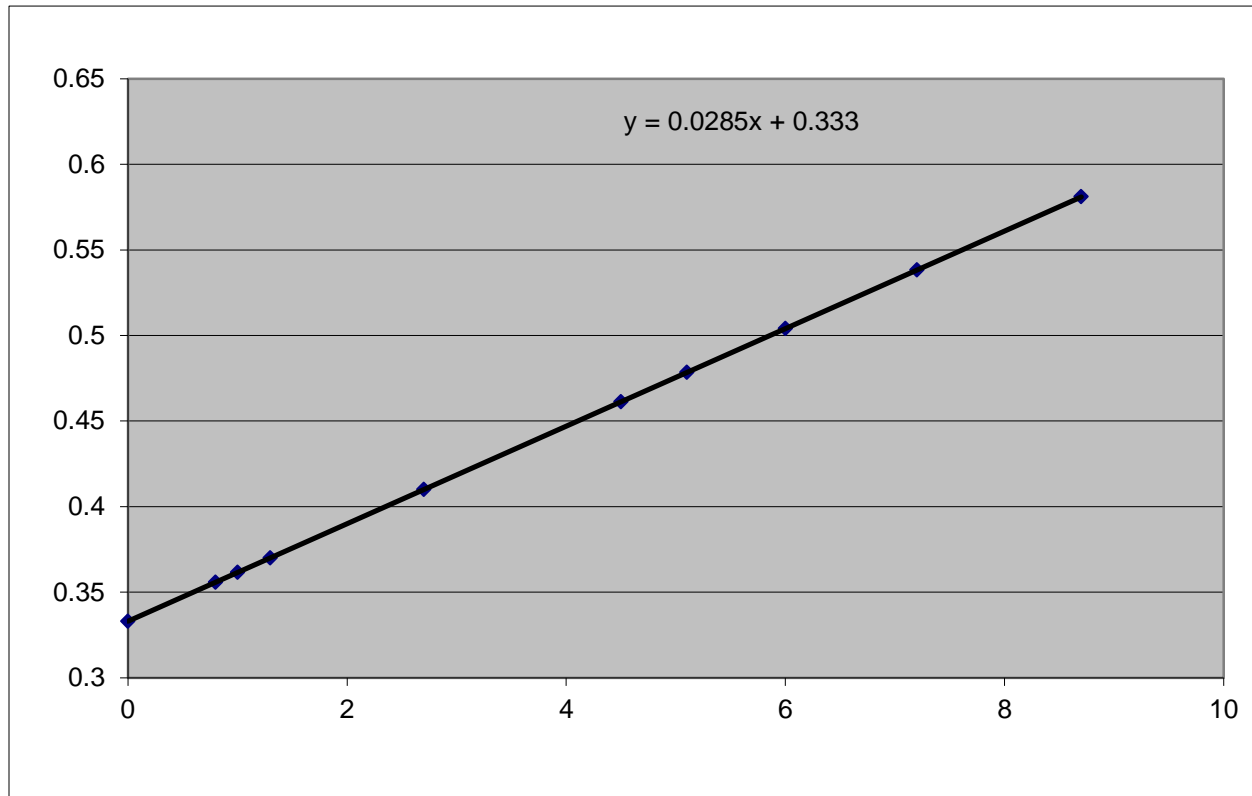
They may be positive or negative



Measures of misfit – L1 and L2 norms



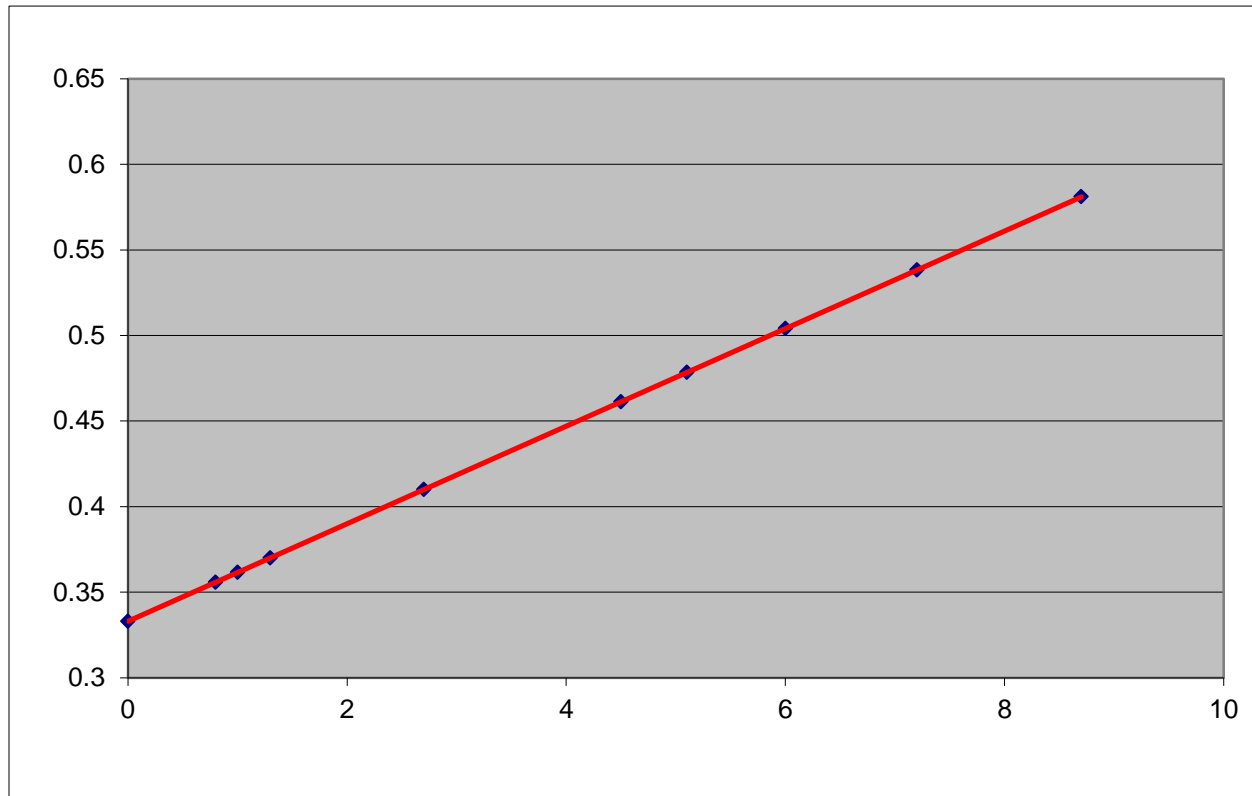
Measures of misfit – L1 and L2 norms



Original data

Misfit = sum of squares of residuals (L2 norm = least-squares)

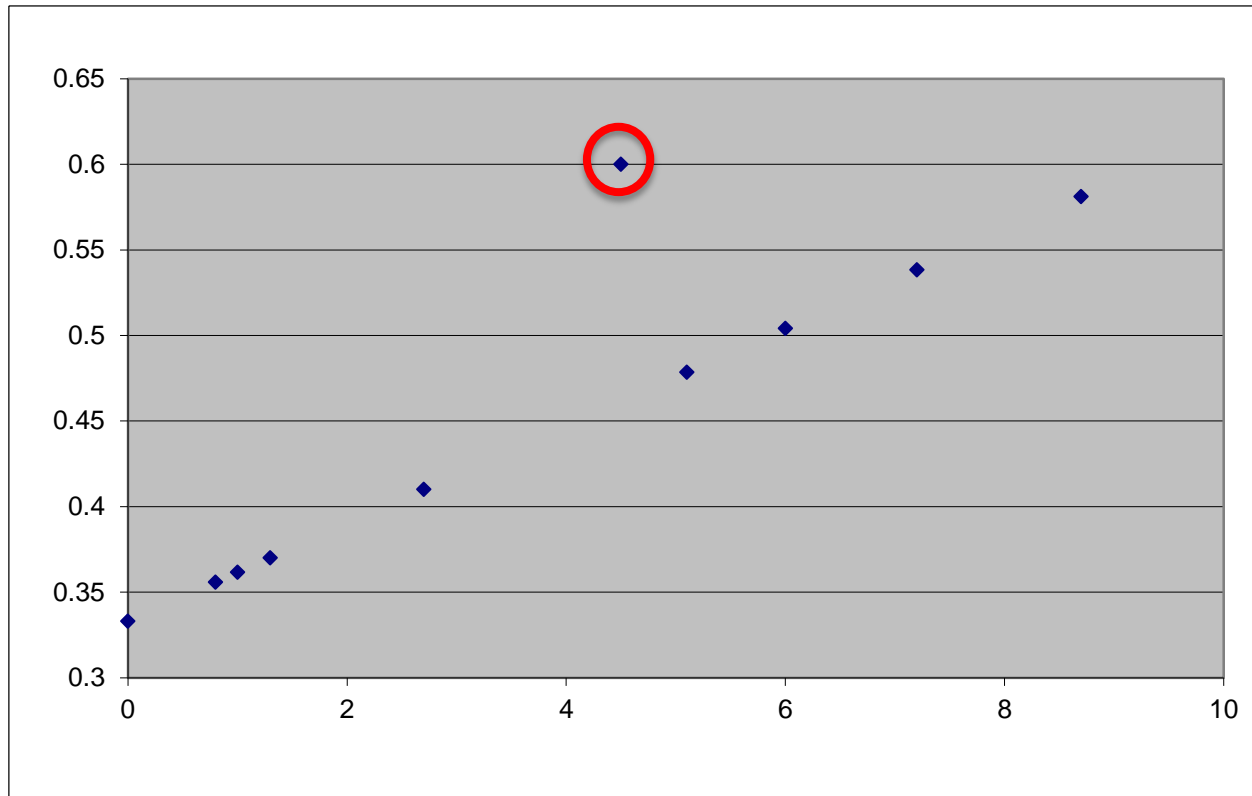
Measures of misfit – L1 and L2 norms



Original data

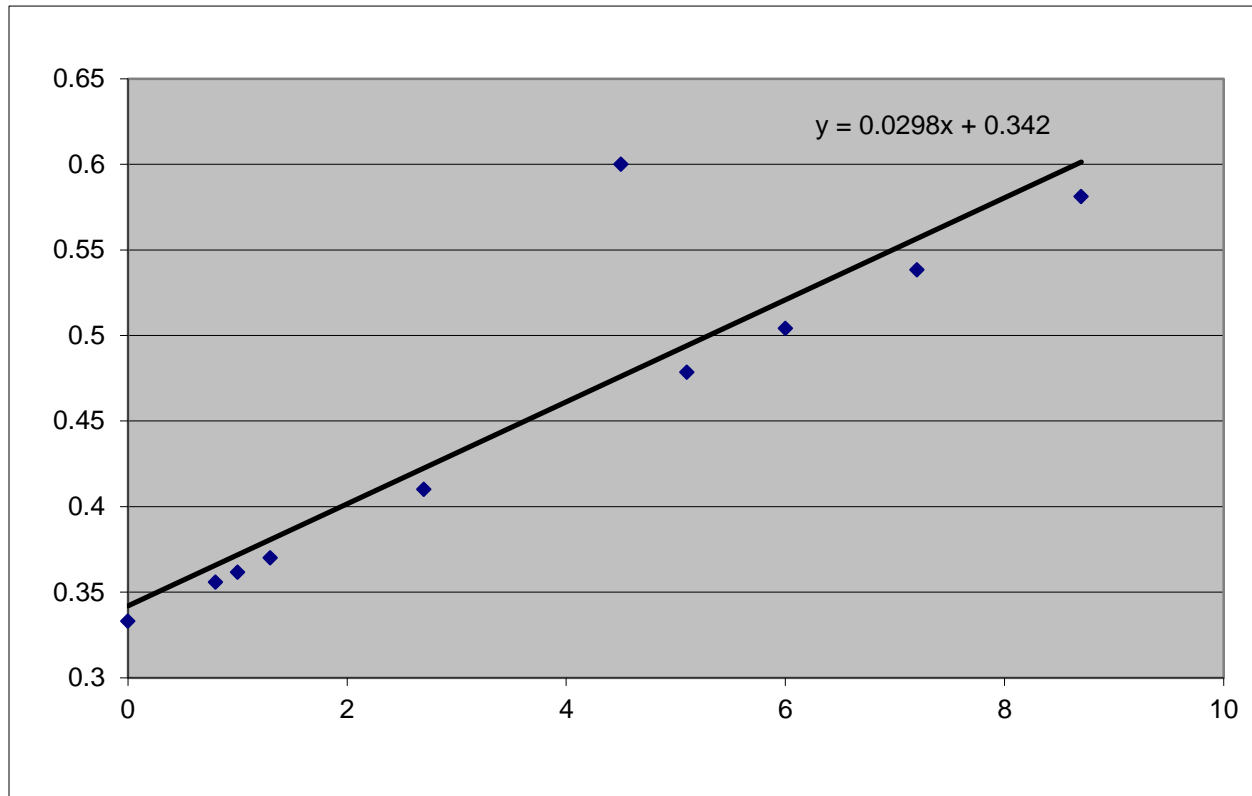
Misfit = sum of absolute values of residuals (L1 norm)

Measures of misfit – L1 and L2 norms



Add an outlying data point

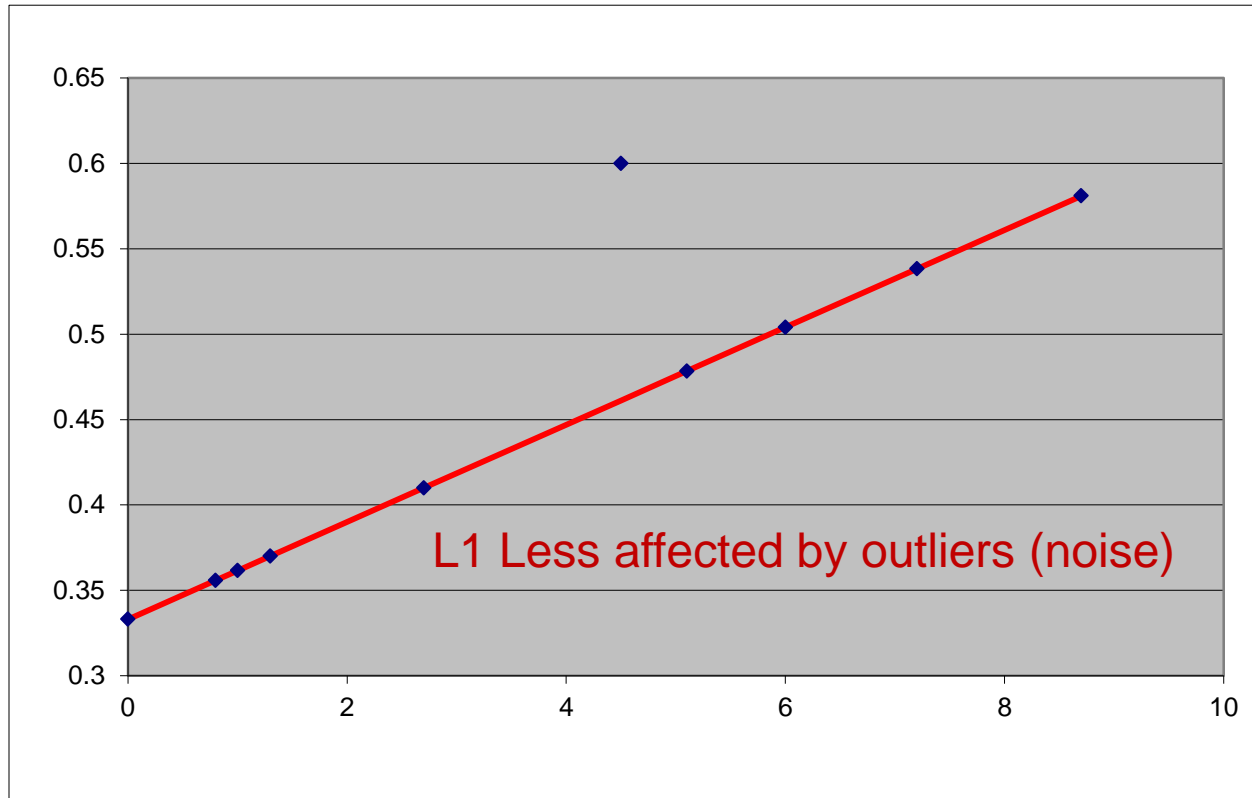
Measures of misfit – L1 and L2 norms



One outlying data point

Misfit = sum of squares of residuals (L2 norm = least-squares)

Measures of misfit – L1 and L2 norms



One outlying data point

Misfit = sum of absolute values of residuals (L1 norm)

Combining model norms and misfit

A statement of the inverse problem is:

Find the model which

Minimises the model norm (ϕ_M), and

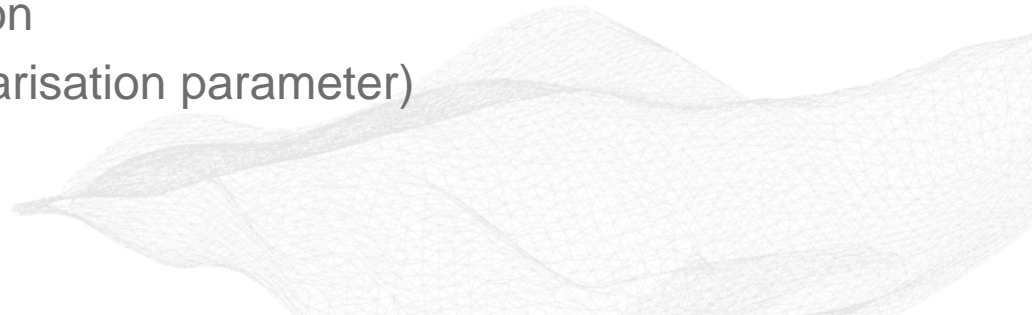
Produces an acceptably small data misfit (ϕ_D)

Mathematically, this becomes a single optimisation

“Minimise $\phi = \phi_D + \beta \phi_M$ ” (subject to $\phi_d < \text{tolerance}$)

ϕ is the combined objective function

β is the trade off parameter (regularisation parameter)



β is the regularization parameter

- Solve:

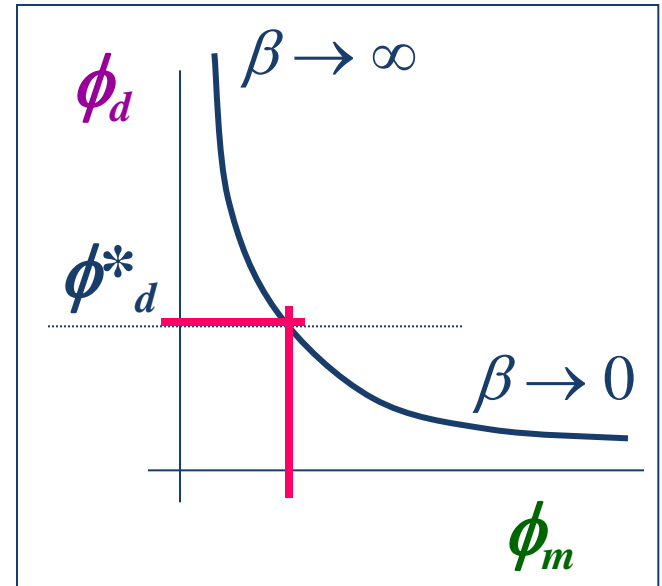
$$\phi(m) = \phi_d(m) + \beta \phi_m(m)$$

- β too large \Rightarrow underfitting the data.

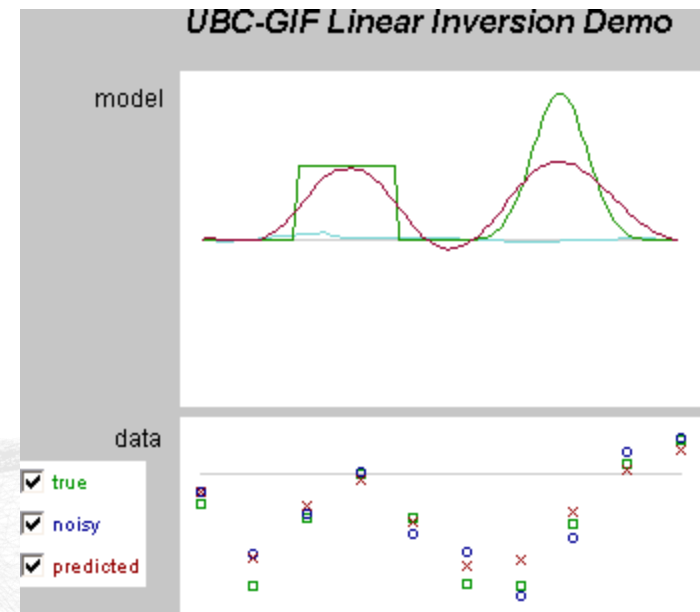
Structural information lost.

- β too small \Rightarrow overfitting the data.
Noise becomes imaged as structure.

- β just right ($\phi_d \approx N$) \Rightarrow optimal fit.
Best estimate of a model which adequately re-creates the observations.



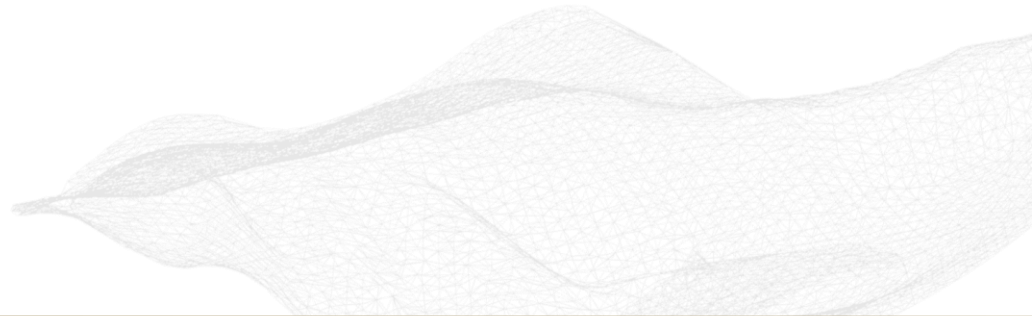
Tikhonov curve



Inverse Modelling

Non-Uniqueness: *Solution (partial...)*

- Provide explicit geological information
 - **Constraints**
- Combine information from independent geophysical methods
 - Joint or Cooperative Inversions
e.g. Gravity with Magnetics, Airborne EM with CSAMT, etc.



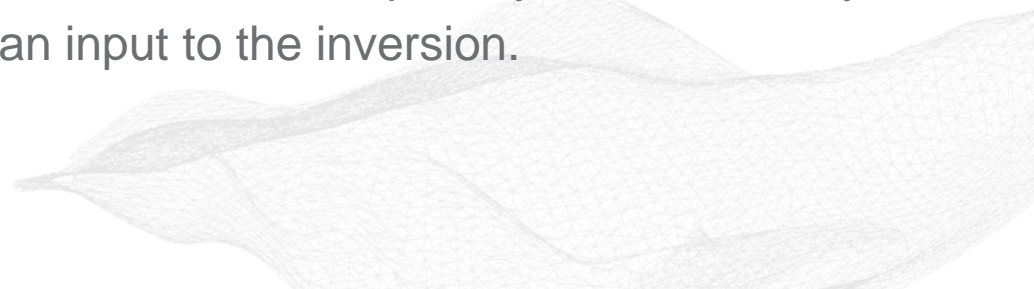
Integrated Modelling: Constraints

Sources of Data

- Geologic Mapping
- DH geological logs
- Interpreted cross-sections
- 3D geological models
- Physical property data per lithology
- Located physical property data measurements

Some information is subjective and some information is objective.

As with the geophysical data we would desire to quantify the uncertainty associated with this data as an input to the inversion.

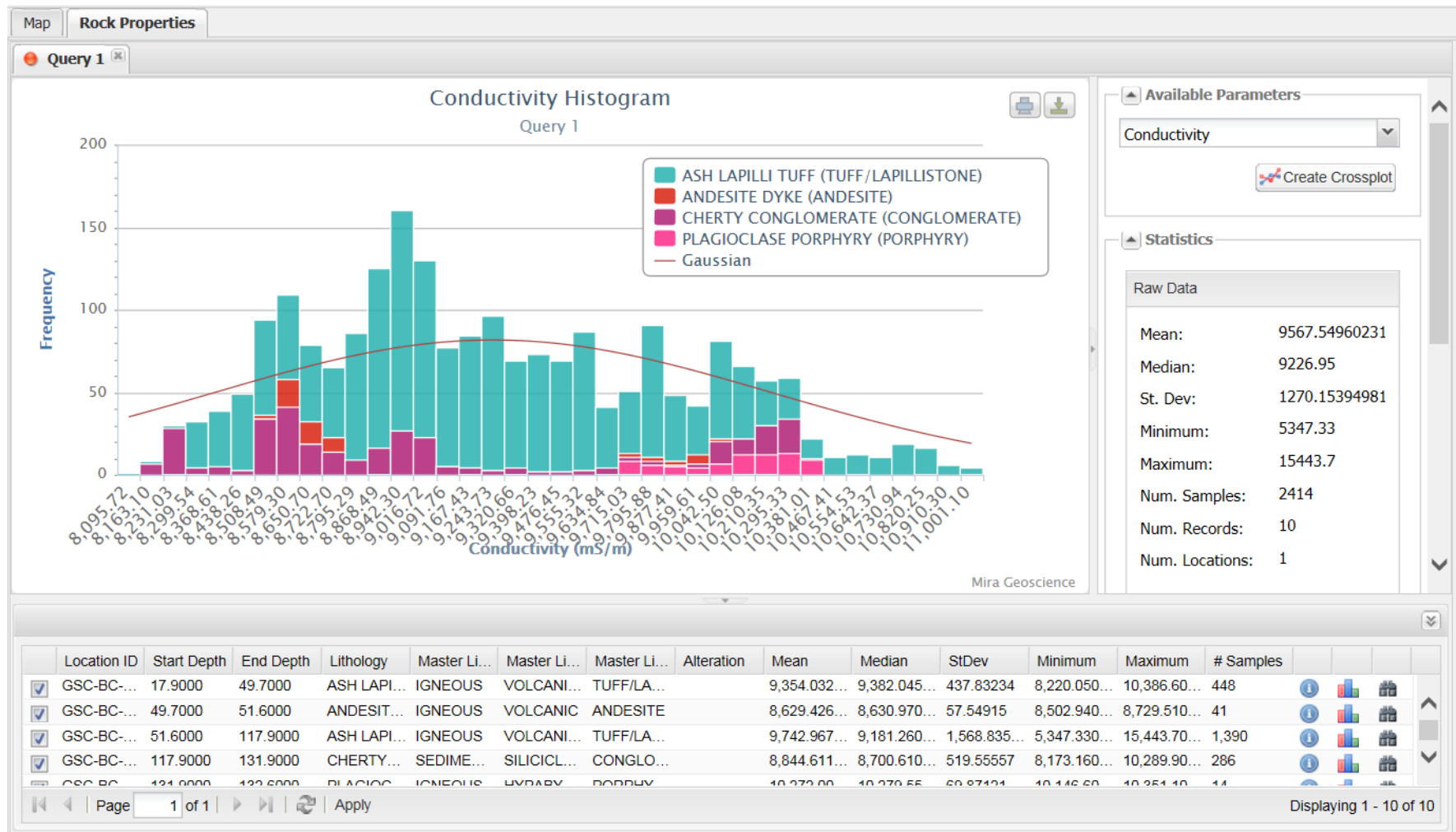


Shameless plug – Mira Geoscience Rock Property Database System

<http://rpds.mirageosience.com/>

The screenshot shows the Mira Geoscience Rock Property Database System interface. The main window is titled "Rock Properties" and features a search bar with "Query 1" and a "Red" color selection. Below the search bar, there are several filter categories: "Physical Property:", "Master Lithology", "Level 1:", "Level 2:", "Level 3:", "Country:", "Province/State:", and "Area:". Each category has a list of properties to filter by. For example, "Physical Property:" includes Density, Magnetic Susceptibility, Resistivity, and Conductivity. "Level 1:" includes Chargeability, P-Wave Velocity, S-Wave Velocity, and Gamma Ray. "Level 2:" includes Air Permeability, Bulk Density, and Caliper. "Level 3:" includes Density * Velocity (calcul), Dielectric Constant, and Effective Porosity. There is an "Add Filter" button at the bottom of the filter list. The interface also includes "Add Query" and "Combine Query" buttons. On the right side, there is a "Map" dropdown menu. The background of the interface shows a map of Australia and New Zealand. A large yellow starburst graphic with the word "Free!" is overlaid on the map. In the foreground, a book titled "HANDBOOK OF PHYSICAL PROPERTIES OF ROCKS" by Robert S. Carmichael, Volume III, is displayed. The book cover is yellow with a gold border and features the CRC logo at the top and the CRC PRESS logo at the bottom.

Rock Property Database System



Common Earth Modelling

Extending the model to include multiple properties, that honour multiple data sets, on a single model object.

Goal:

Obtain the most complete representation of the earth.

Benefits:

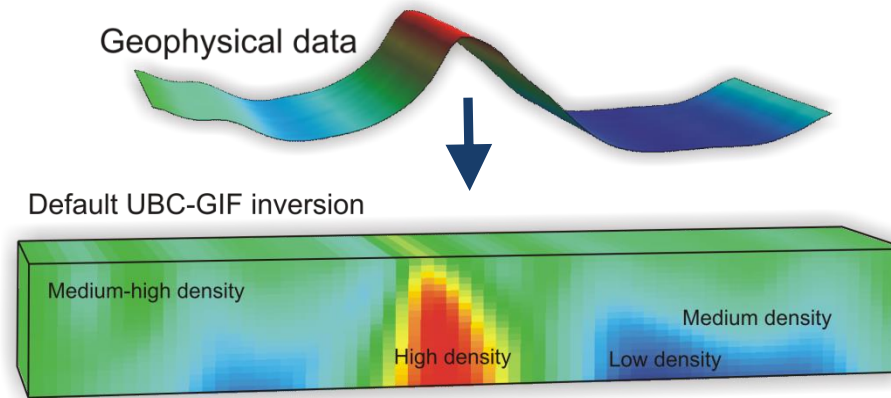
Improved resolution away from constraints

Allows more precise exploration using quantitative 3D GIS analysis.



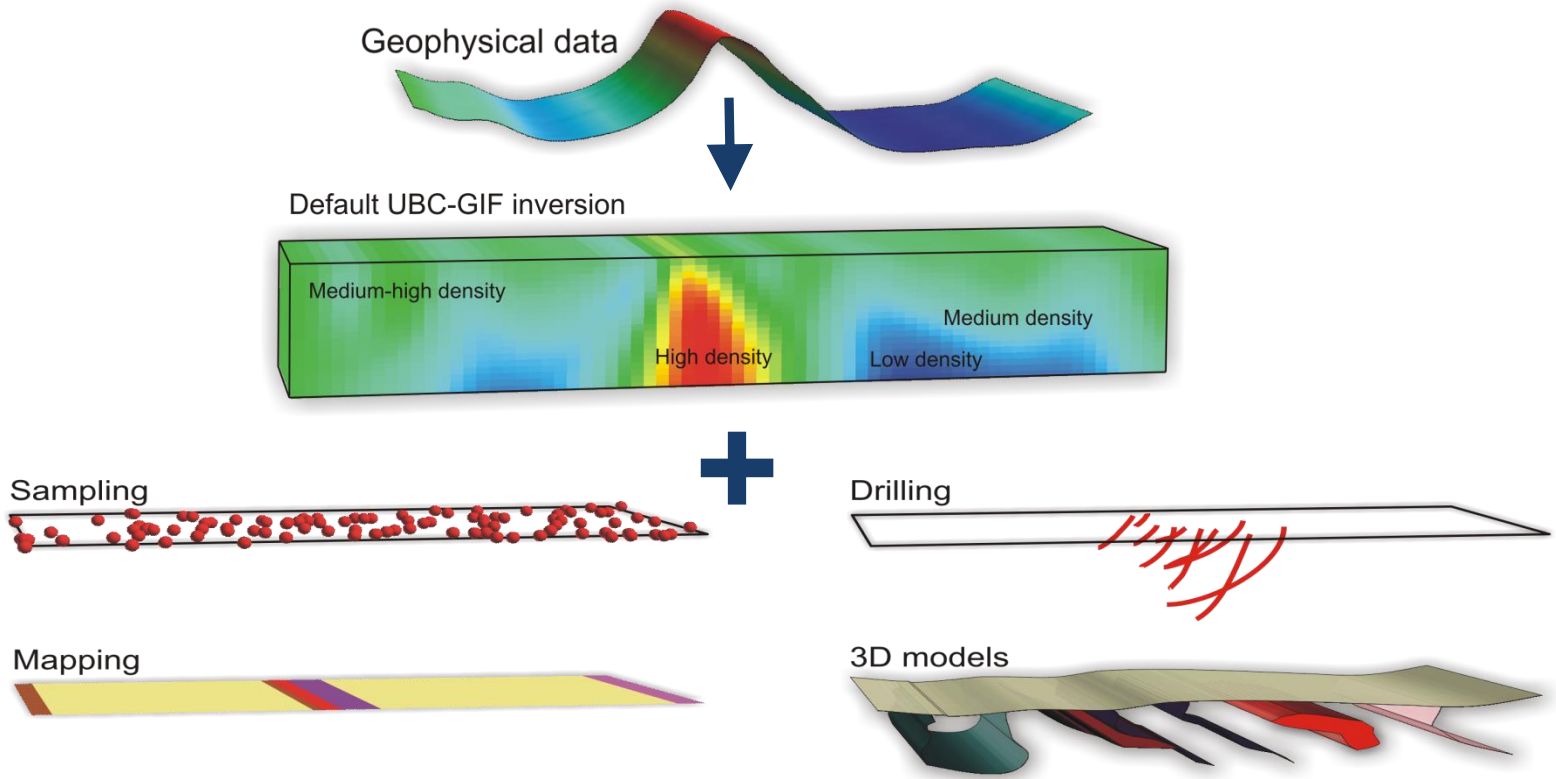
Common Earth Modelling: Constrained Inversion Modelling

2D Gravity Synthetic



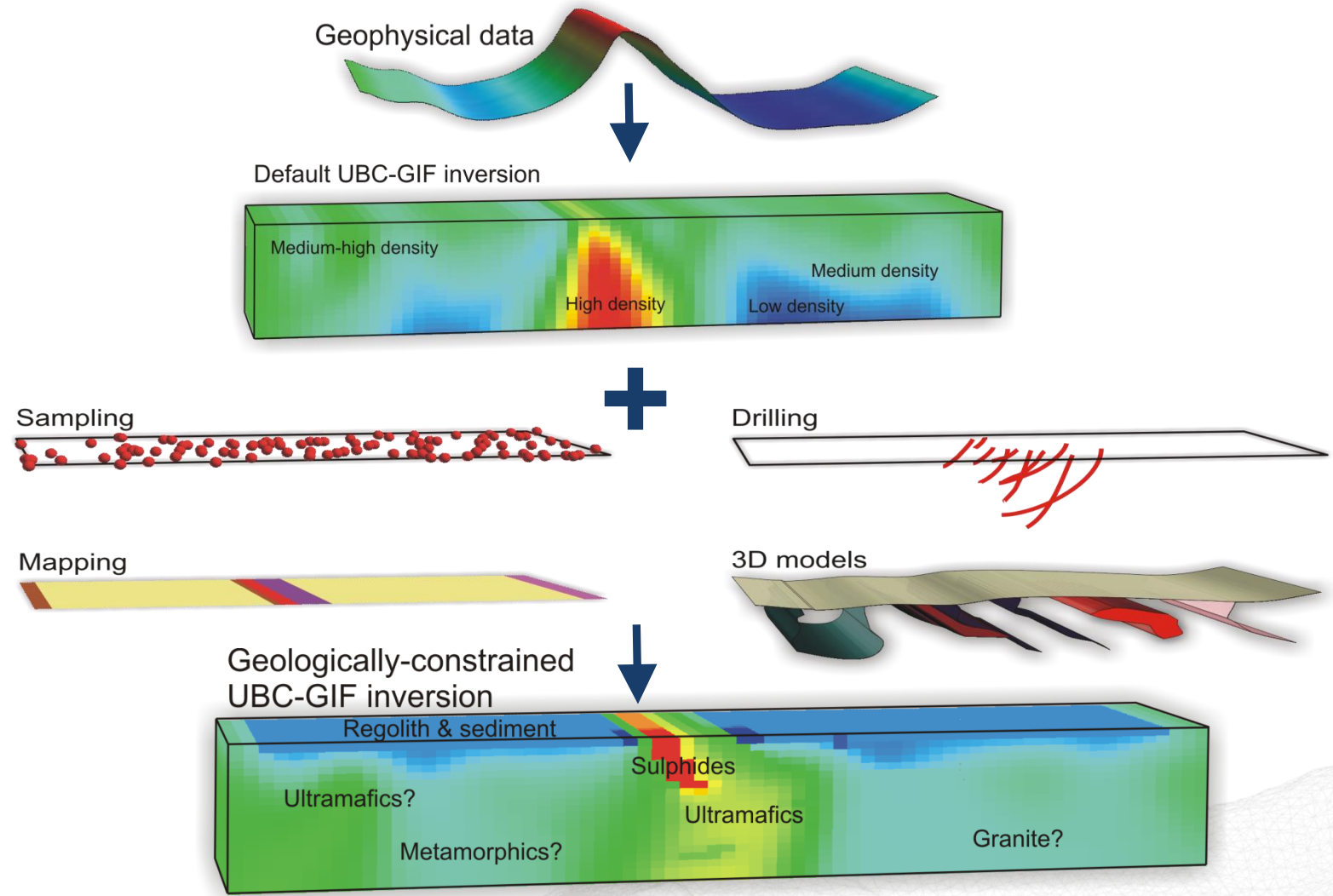
Common Earth Modelling: Constrained Inversion Modelling

2D Gravity Synthetic



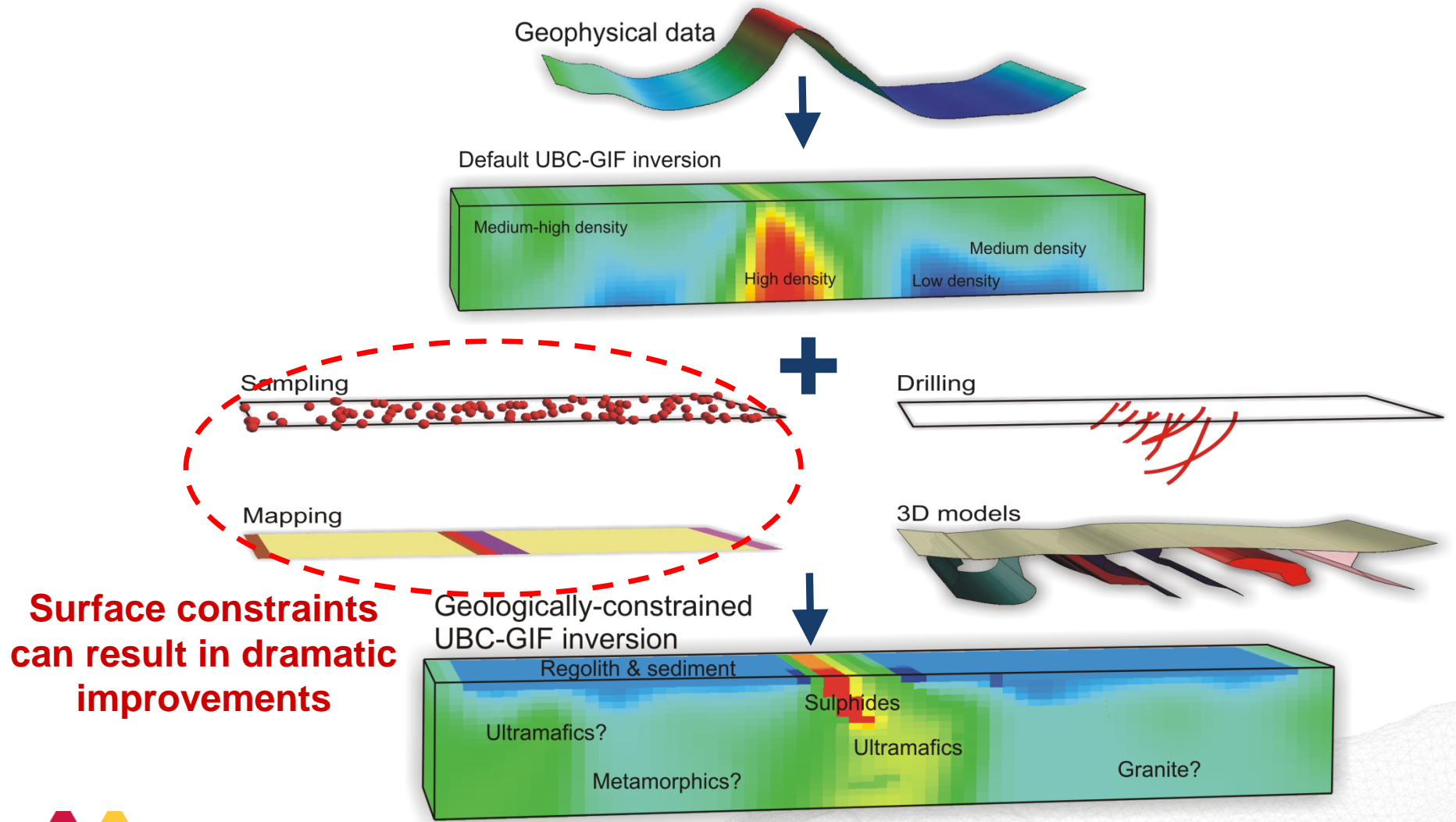
Common Earth Modelling: Constrained Inversion Modelling

2D Gravity Synthetic



Common Earth Modelling: Constrained Inversion Modelling

2D Gravity Synthetic



Surface constraints can result in dramatic improvements

(Nick Williams)

Joint and cooperative inversion

Inversion using more than one geophysical method

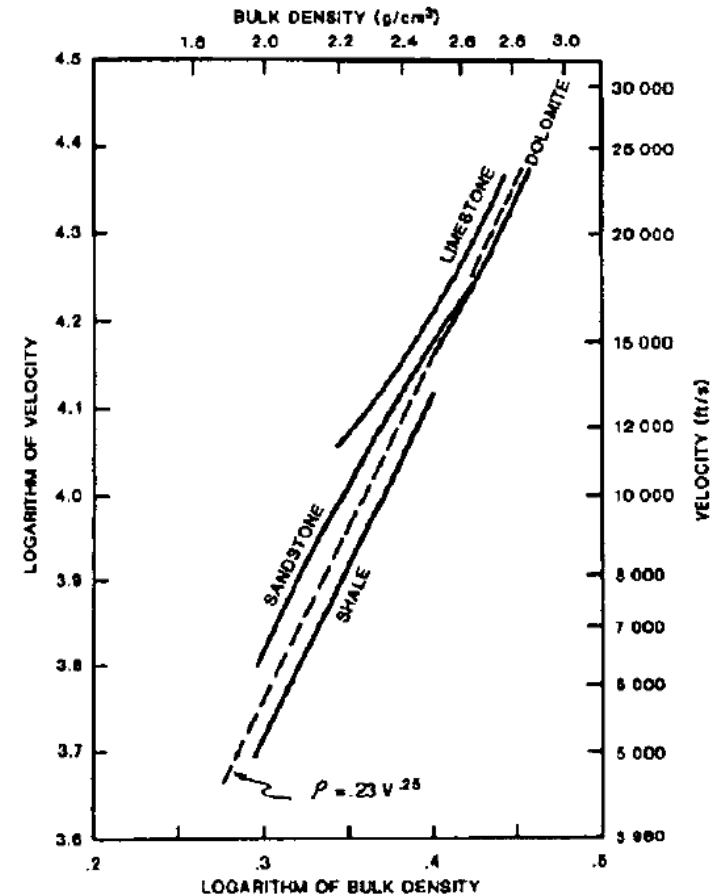
Methods sensitive to same physical property (e.g., TEM and CSAMT)

Methods sensitive to related properties (e.g., seismic and gravity)

Joint inversion – single objective function

Cooperative inversion – iterative/sequential approach

These approaches require that we establish relationships between the physical properties each method is sensitive to



Appraisal – How good is our model?

Over-fitting vs under-fitting data

Limits to the data

Limits to the physics

Depth of investigation

Suite of models

Point-spread functions

Model resolution analysis

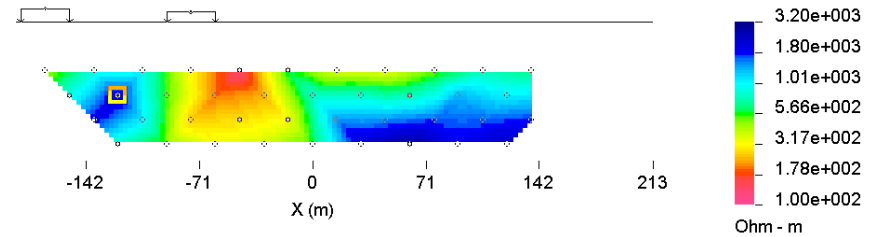
Sensitivity analysis

Extremal models

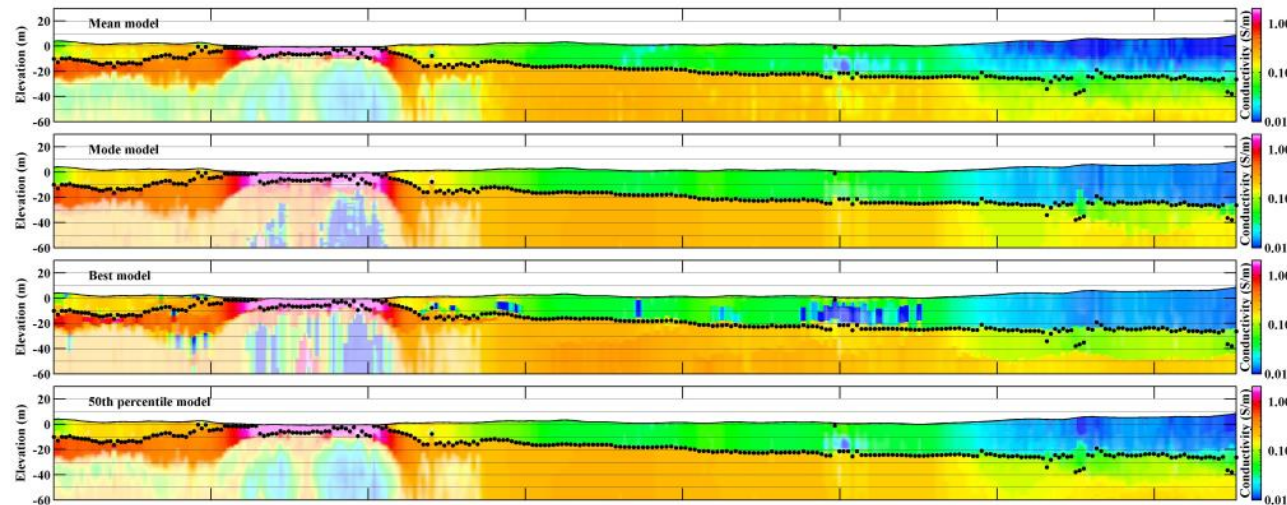
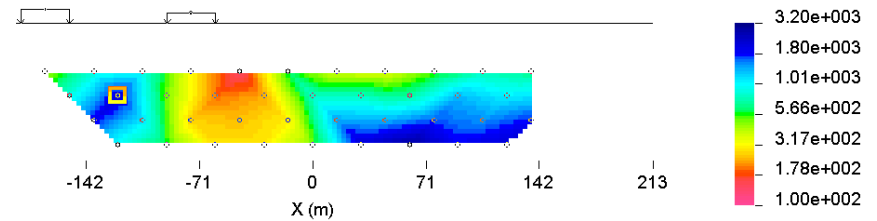
Model Covariance Matrix

Co-Kriging error

L24E : dipole-dipole : 40 data
Observed Apparent Resistivity



Predicted Data



Summary and conclusion

Inversion has the potential to greatly improve the geological interpretation of geophysical data

- High quality data is essential for the success of geophysical modelling
- More appropriate/efficient surveys can be designed
- Complex data sets can be understood (DH IP, 3D EM)

Understanding physical property data is the key to successful inversion interpretation.

- Rock type
- Alteration
- Mineralization



Summary and conclusion

Non uniqueness in inversion is dealt with by imposing constraints

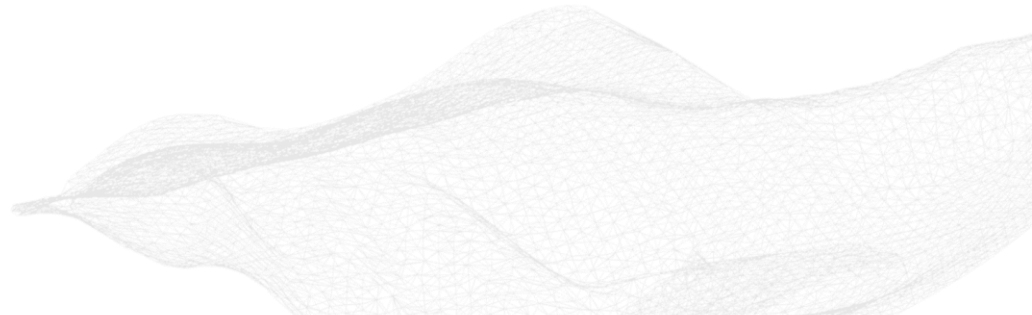
- Provide the constraints or they will be provided for you
- Minimum structure or geological

Interpretation of inversion requires understanding of which parts of the model are driven by constraints and which parts are driven by data.

- Requires inspection of multiple models

Inspect observed and predicted data before accepting a model.

- Did the inversion fit the data anomalies you are interested in?
- Beware of over-fitting and under-fitting your data



Summary and conclusion

Geologically constrained inversion will greatly improve your results

- Constraints can be factual or conceptual (hypothesis testing)
- Sparse or detailed
- From different sources

Geological maps

Outcrop samples

Estimates of overburden depth

Detailed drill data



Acknowledgements

Nigel Phillips

Dianne Mitchinson

Scott Napier

Shannon Frey

Thomas Campagne

- Mira Geoscience, Vancouver

Ross Brodie

- Geoscience Australia

Ken Witherly

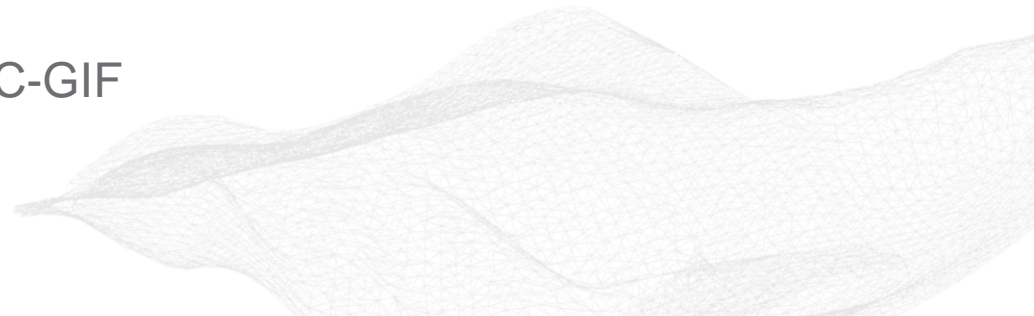
- Condor Consulting

Regis Neroni

- FMGL

Doug Oldenburg

- UBC-GIF



Reference

Inversion for Applied Geophysics

<http://www.eos.ubc.ca/research/ubcgif/iag/iag-outline.htm>

